

# Math Sequence

Placement into mathematics courses is based on score on an acceptable Placement test, ACT/SAT math subscore, or prior coursework.

\* Geometry is also a requirement for these courses. This requirement may be met with completion of MATH 095 with a C or better, successful completion of one year of high school geometry at a regionally-accredited school, or by an acceptable Placement proficiency test.

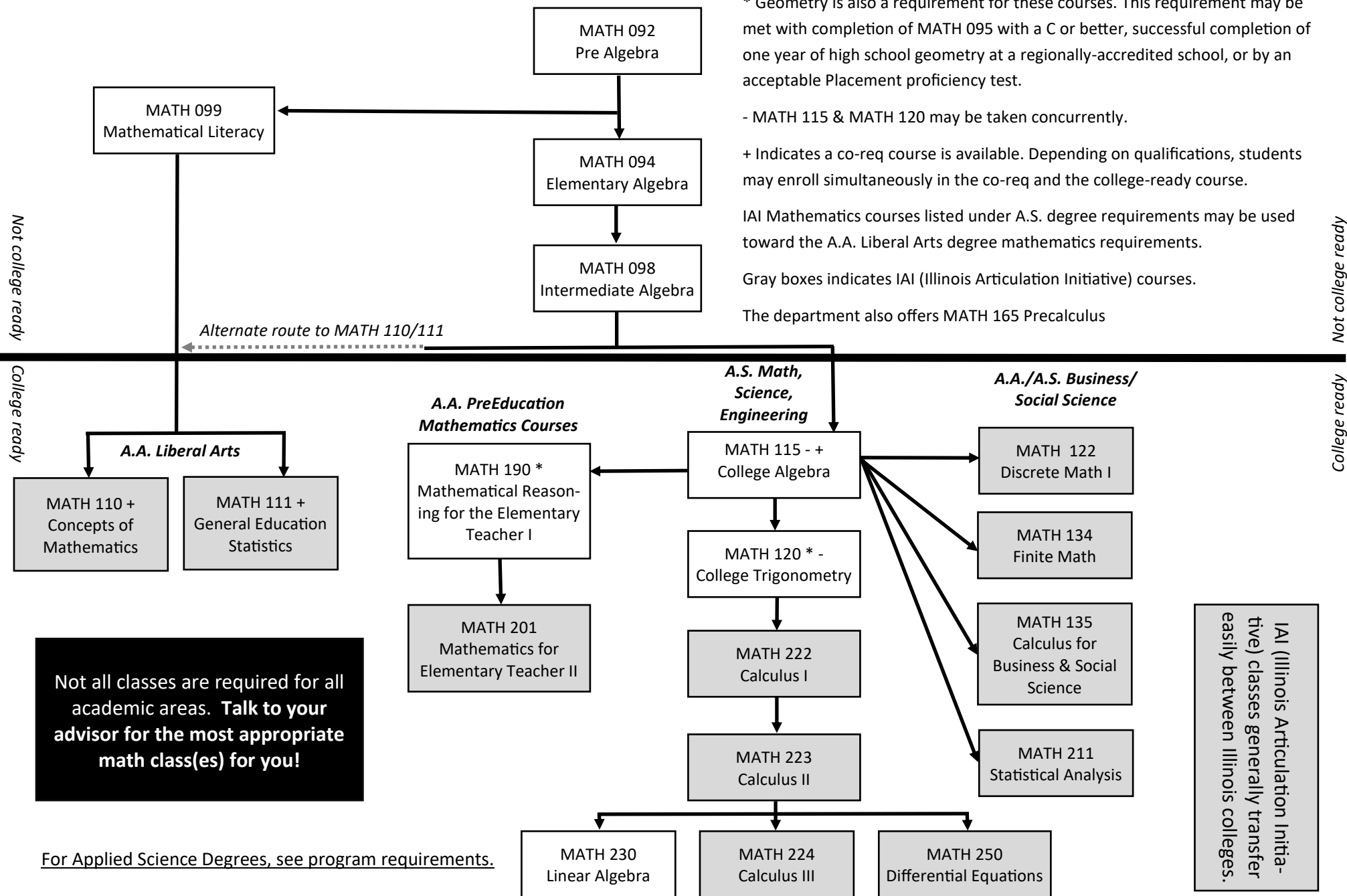
- MATH 115 & MATH 120 may be taken concurrently.

+ Indicates a co-req course is available. Depending on qualifications, students may enroll simultaneously in the co-req and the college-ready course.

IAI Mathematics courses listed under A.S. degree requirements may be used toward the A.A. Liberal Arts degree mathematics requirements.

Gray boxes indicates IAI (Illinois Articulation Initiative) courses.

The department also offers MATH 165 Precalculus



**Not all classes are required for all academic areas. Talk to your advisor for the most appropriate math class(es) for you!**

For Applied Science Degrees, see program requirements.

IAI (Illinois Articulation Initiative) classes generally transfer easily between Illinois colleges.